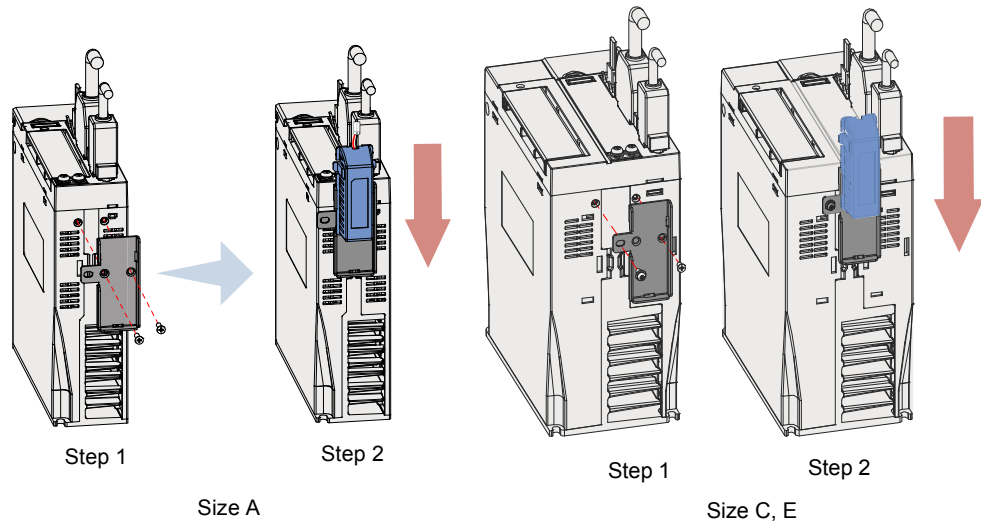


- Installing the battery box

The following figure shows the installation and connection procedure of the battery box.

Figure 3-12 Installation diagram of battery box for absolute encoder



Fasten the battery box with two flat-head screws for size A models and one flat-head screw plus one pan-head screw for size C and E models. The flat-head screw is fixed into the flat-head slot.

3

- Removing the battery box

The battery may have leakage after a long-time use. Replace it every two years.

Remove the battery box in steps reverse to those in the preceding figure.

When closing the battery box cover, prevent the connector cables from being pinched.

